

„Not only the quality of the embryo is important for a successful embryo transfer, but also the time when the embryo is transferred to the uterus.

The importance of the GERT test lies in the ability to determine the implantation window of the endometrium and determine the optimal embryo transfer time for each patient individually. The probability of successful implantation and subsequent pregnancy increases significantly.“

MUDr. Alena Šestínová
Head doctor of IVF, GENNET



The price of the examination

The current price of the GERT test is listed in the Assisted Reproduction Price List on the clinic's website. The attending physician will also inform you about the price of the test.



Note:

Please note that treatment success is individual in all circumstances and we cannot guarantee treatment success in a specific case. Embryo implantation failure can occur for various reasons, therefore carrying out an embryo transfer according to the results of the GERT test cannot 100% guarantee the success of implantation.



GENNET Archa, Praha 1
Na Poříčí 26, 110 00

ivf@gennet.eu

IVF · Immunology · Genetics



GENNET Letná, Praha 7
Kostelní 9, 170 00

IVF · Fetal Medicine · Urology · Andrology
Gynecology · Genetics



GENNET Liberec
Liliová 1, 460 01

IVF · Fetal Medicine · Genetics



GNTlabs by GENNET, Praha 5
Pekařská 635/6, 158 00

Laboratories

WWW.GENNET.CZ/EN

GENNET | member of FutureLife°

FQ-MKT-023a 23/05/2023 V1



GENNET

Where Excellence
Meets **Hope**

GERT

GENNET Endometrium Receptivity Test

Examination of endometrial sensitivity determines the ideal time for embryo transfer.



GERT - GENNET Endometrial Receptivity test helps to determine the exact period of the menstrual cycle when the endometrial lining is properly receptive to the implantation of the embryo, the so-called implantation window.

GERT determines the ideal time for embryo transfer.



The timing of the transfer is crucial for successful embryo implantation.

The basic prerequisite for a successful embryo transfer is the successful attachment of the embryo to the endometrium. The key factor for successful implantation is not only the quality of the embryos but also the time of the embryo transfer.

Endometrium is oblivious to the embryo (it does not allow the embryo to implant) for most of the menstrual cycle. But later, the endometrium becomes ideally receptive around 6th to 10th day after ovulation, and during these 4 – 5 days, the so-called implantation window occurs - the time when the endometrium is most receptive to embryo transfer.

A regular ultrasound examination allows the endometrium to be evaluated only based on its height and structure. With the help of GERT, it is possible to look at the endometrium on a molecular level and precisely determine the implantation window.

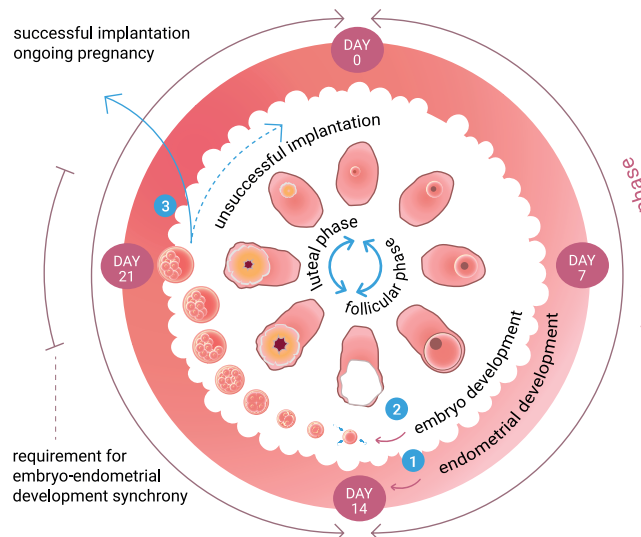
Studies have shown that in almost a third of women, the endometrial implantation window is shifted compared to the average in the population. GERT can thus significantly increase the effectiveness of treatment with assisted reproduction methods.

Who is the test intended for?

Various factors cause implantation failure and insufficient receptivity of the endometrium at the time of embryo transfer is just one of them. Therefore, we recommend GERT to women with repeated embryo implantation failures.

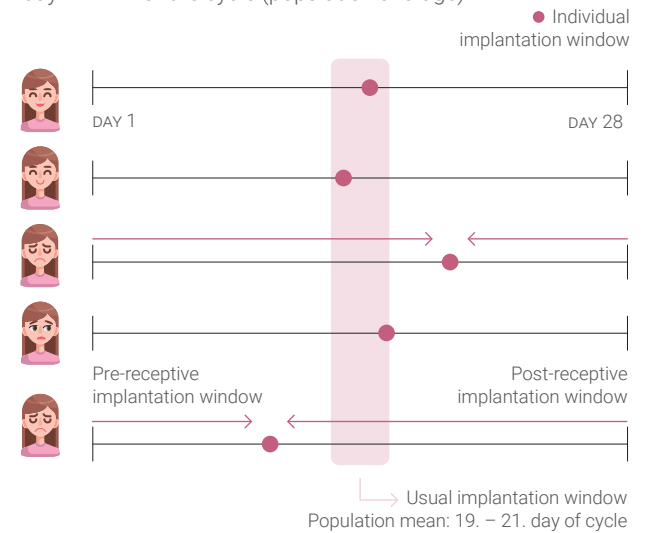
Approximately one third of women have a shifted implantation window compared to the average in the population. The ideal time for embryo insertion is therefore a little earlier or later for them than for most women..

Synchronization of the development of the embryo and the endometrium are essential for successful implantation.



Menstrual cycle

Implantation success rate in the case of embryo transfer day 19 – 21 of the cycle (population average)



How the examination takes place

• Sampling

The examination is performed on an outpatient basis with no need for anesthesia. The doctor takes a small piece of tissue from the patient's endometrium, ideally in the cycle preceding the embryo transfer. The doctor inserts a thin catheter through the cervix and takes a sample. The procedure typically takes 10 – 15 minutes.

• Sample analysis

The collected tissue is then subjected to molecular genetic examination. The results of the examination are compared with a prediction model that identifies the phase of receptivity the endometrium was in at the time the tissue was sampled.

• Test results and subsequent recommendations

We can find out when the endometrium is properly receptive to the embryo through this examination. The optimal time (day and hour) of the personalized embryo transfer is recommended to the patient based on the results.

